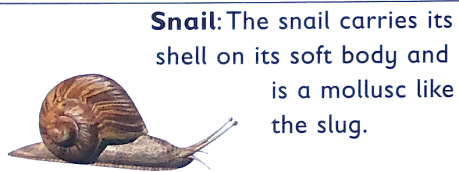
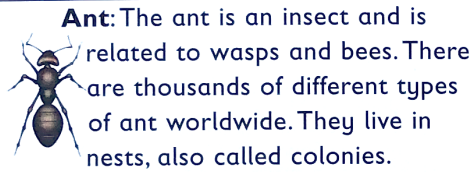


Identification guide

Use this guide to help you identify the minibeasts that you find. They are listed in the order in which they are featured in the book. As there are thousands of different minibeasts, you may need to use a field guide or the Internet as well.



Snail: The snail carries its shell on its soft body and is a mollusc like the slug.



Ant: The ant is an insect and is related to wasps and bees. There are thousands of different types of ant worldwide. They live in nests, also called colonies.

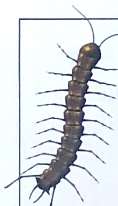
Slug: A mollusc, the slug has a shiny, wet body and moves along on its one 'foot'. The slug's tentacles help it to see, feel and smell.



Beetle: An insect with two pairs of wings. The front wings have become a hard, shiny wing case to protect the soft back wings, used for flying.



Woodlouse: A small, usually grey minibeast with a hard, armoured skin. It is a crustacean and lives in dark, damp places.



Centipede: A fast-moving flat, long minibeast. It has one pair of legs on each section of its body. It can be found under stones, in cracks or in soil.

Earwig: A small, brown, shiny insect with pincers at the back of its body. It usually lives under stones or in cracks in walls or the ground.



Here are some other common minibeasts you might come across. Some are mentioned in this book.

Aphid: A small green or black insect that belongs to the bug family. Like all bugs, it has a sharp, piercing mouth. It feeds by sucking on plants.



Millipede: The millipede is long and slim but is more tube-shaped, rather than flat like the centipede. It moves along smoothly on its many legs.



Mite: This tiny animal has eight legs and is an arachnid, like the spider.

Bee: Bees are flying insects and there are many types. Some live in nests with other bees while others live alone. All bees sting if they feel they are in danger, so don't touch!



Silverfish: Silverfish have remained almost the same since the time of the dinosaurs. These small, grey insects like dark, damp places and feed on tiny plants in the soil.



Beetle grub: The young of a beetle, also called a larva. Some grubs live underground, others in rotting wood.



Spider: Spiders come in all shapes and sizes but they all have eight legs and a body in two parts. They belong to the arachnids and are not insects.



Ladybird: A flying insect with two pairs of wings. Ladybirds are small beetles that eat aphids.

Wasp: A flying insect with two pairs of wings. If wasps feel in danger they will sting, so don't touch!



Harvestman: A harvestman has eight legs and a body in one piece. It belongs to the arachnid family of animals, like the spider.



Worm: This long pink- or red-coloured animal lives under the ground.

