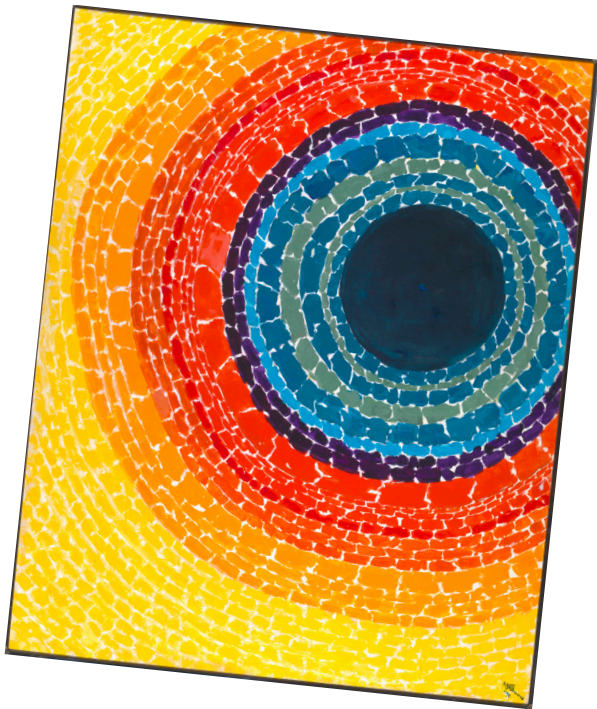


Alma Thomas



🔍 Born in 1891, Thomas was an African-American Artist and was connected to the Washington Color School. She was also described by some as an expressionist, meaning the artworks represented an emotional experience.

For this activity you will need:

2x Plain paper, water colour paints, paint brush and a pot of water .

①

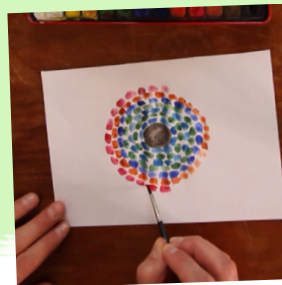
Let's start with Thomas's circle eclipse painting! Begin by painting a black circle in the centre of your page.



→ Next paint navy blue marks around the circle without blending them together. Continue to paint in the same order of colours you can see.



→ As you work your way outwards you'll notice that some rows have the same colour continue for a while. Keep going until you reach the edges of your page.



→ When you look at it, what does it make you think about and how does it make you feel?



②

Now let's use a colour wheel for our second painting. With your two fingers imagine you're standing on a giant colour wheel and jumping from one colour to the next!



→ With the colour you started on, paint down your page like its falling rain.



→ What colour would you move to next? So on and so on; keep going until you've worked your way across your page.



→ All that rain has made a beautiful waterfall. How does this painting make you feel?



3

If each colour could represent a feeling, what colour would you paint right now?

→ Start with that colour across the bottom of your page, like little bricks.

→ Working your way upwards; think of all the other feelings you can have throughout the day and what colours they might be.

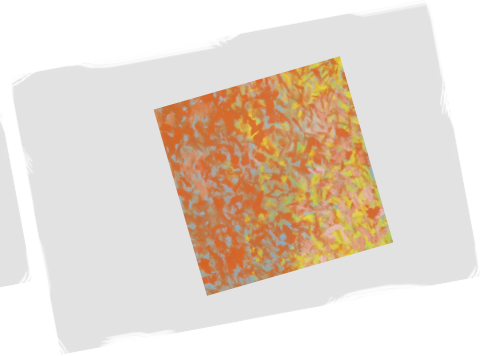
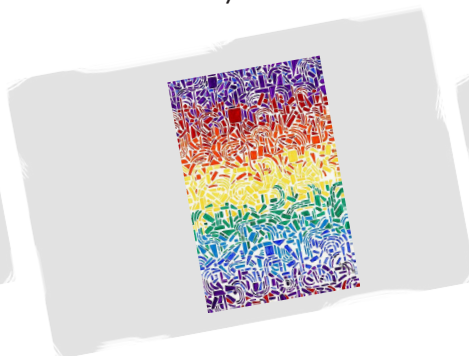
→ When it's finished leave it somewhere to dry!



Final Outcome:



+ Using the same techniques, here's what else you could make:



If you like Alma Thomas, you might also like:



Queenie McKenzie



Kenneth Noland



We have loved seeing all the amazing art you have been making, so keep sharing!

Send us a picture of what you make to:
creative.charlesdickens@gmail.com

Keep up the great work!