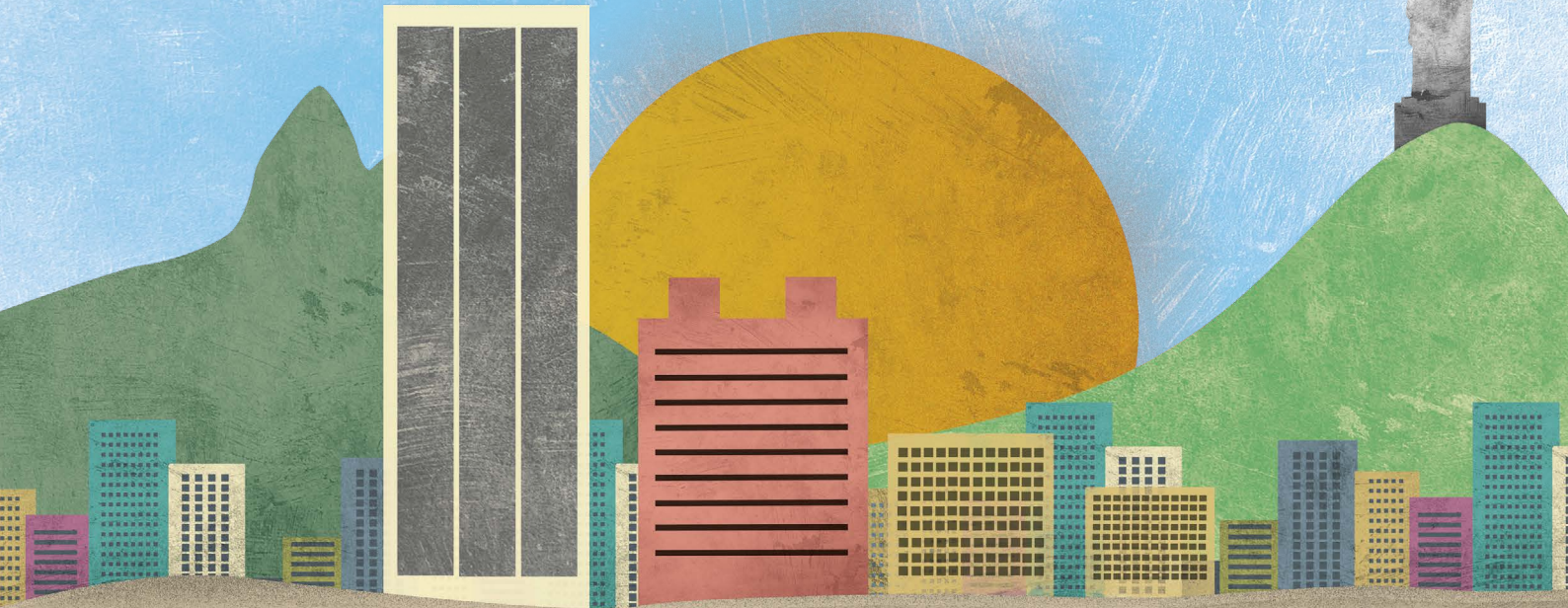


RIO DE JANEIRO



Physical Geography



Terrain

Rio de Janeiro nestles between the mountains and the sea. Sugarloaf mountain is located in Rio.



Climate

Rio has a tropical wet and dry climate. The city experiences hot, humid summers, and warm, wet winters. While the absolute maximum was 43.2 °C the lowest temperature recorded was 10.1 °C



Coastline and Bodies of Water

Rio de Janeiro is located on the coast of the Atlantic ocean which lies to the East of the city. The city has beautiful beaches such as Copacabana.



Forest

The city has parks and ecological reserves such as the Tijuca National Park, the world's first urban forest.

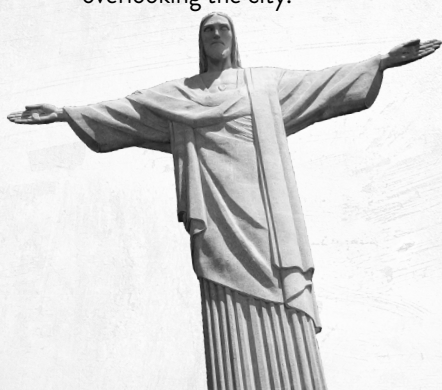


Human Geography



Landmarks

Rio de Janeiro's most famous landmark is Christ the Redeemer, a 30 metre high statue of Jesus Christ which stands on top of a hill, overlooking the city.



Housing

In Rio, rich and poor people live in different neighbourhoods. There are slums in the city, called Favelas, where low-income families live.



Language

The main language spoken in Rio is Portuguese because Brazil was colonised by the Portuguese Empire.



Sport

Football is the most popular sport in Rio. The city hosted the 2014 FIFA World Cup.



Culture

Rio de Janeiro's most famous cultural event is Carnival. This is held every year and is believed to be the biggest in the world. Here, samba schools showcase their famous music and dancing to huge crowds.



Religion

Over half of Rio's population identify as Catholic. Many people are Protestant and some have no religion.

LONDON



Physical Geography



Terrain

London has many hills e.g. Parliament Hill, Hampstead Heath and Muswell Hill. It does not have any mountains.



Coastline and Bodies of Water

London is not located on a coast. London is inland. London is 58 kilometres away from the sea.

London has many rivers running through it. Its largest and most famous is the River Thames.



Climate

London has a temperate oceanic climate, with warm summers and cool winters. In the summer the temperature often reaches 23 °C and in the winter it drops to 4 °C.



Forests and Green Spaces

London has many parks, woods and forests e.g. Epping forest in the North East.

Human Geography



Landmarks

Big Ben is the nickname for the Great Bell of the clock at the north end of the Palace of Westminster in London. Tourists flock here to take photos and hear the clock strike the hour.

London is also home to Queen Elizabeth II who lives at Buckingham Palace.



Housing

In London, rich and poor people live together across the whole city. In one street, you may find a wide range of different types of homes.



Language

Many different languages are spoken in London. English is the most common.



Sport

London's most popular sport is football. London hosted the Olympic and Paralympic games in 2012.



Culture

London is a multi-cultural city. There are people from many cultures. It therefore holds a variety of celebrations and festivals all year round. London is the home to countless theatres, museums and galleries.



Religion

A wide variety of faiths is practised in London, Christianity, Islam, Judaism, Hinduism, Sikhism and Buddhism. Many people have no religion at all.