


Judith Rothschild



 Born in 1921 in New York, Rothschild was an abstract painter, art collector and someone who started her own foundation to preserve artworks. Her paintings relate to cubism and the strange perspectives of surrealism.

For this activity you will need:

Plain paper, pencil, water colour paints, paint brush, a pot of water and scissors.

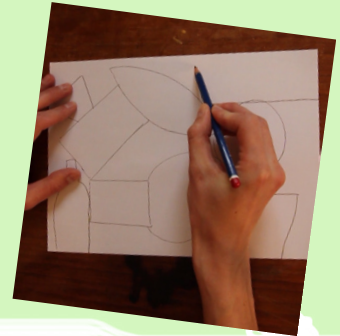
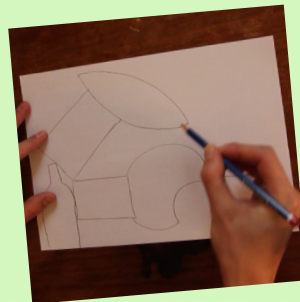
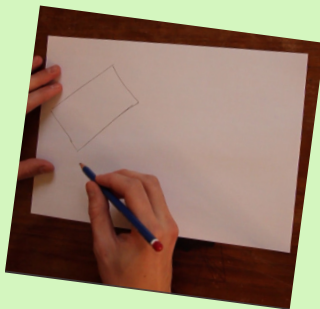
①

We're going to create a painting of shapes that is also a puzzle!

→ In the room you're in, look around you and think about what shapes you can see.

→ Now imagine they're floating around in different places and start to draw them very simply on your page.

→ Upside down, on their side, how about being bigger or even smaller!?



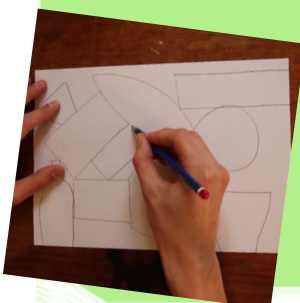
②

Where there aren't shapes you could add the shapes you'd like to see. How about a circular window!?

→ Now using lines, join the shapes together as well a few lines out to the edges. It should start to look like a strange puzzle now.

→ Next paint the shapes. If the colours you can see are boring, changes them to more exciting ones.

→ Then leave the painting to dry.



3

Time to make our painting into a puzzle...



→ With your painting definitely dry, cut out the shapes along the lines you drew earlier. You may need an adult to help you with this but do try you best to do it yourself!

→ Play with it, experiment with it in different arrangements and most importantly; enjoy it.

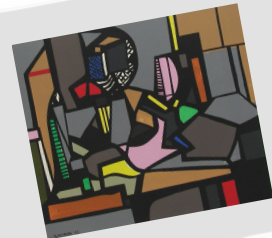
→ If you did, you could make a second puzzle with shapes you can see outside!



Final Outcome:



+ Using the same techniques, here's what else you could make:



If you like Judith Rothschild, you might also like:



Anne Ryan



Hans Hofmann



We have loved seeing all the amazing art you have been making, so keep sharing!

Send us a picture of what you make to: creative.charlesdickens@gmail.com

Keep up the great work!