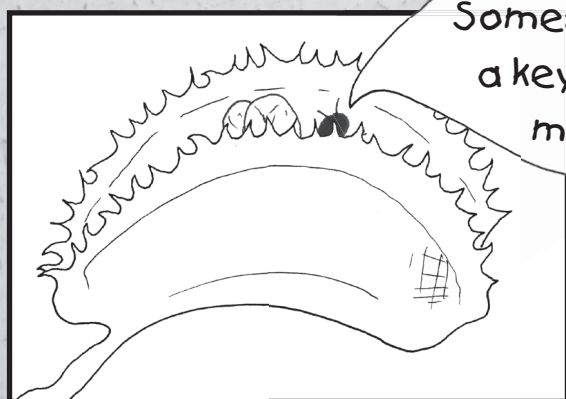
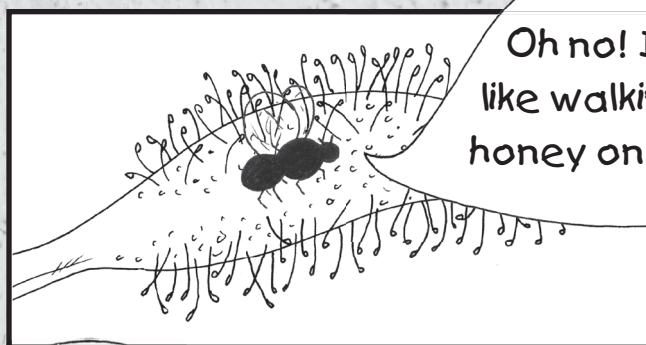


KILLER PLANTS



Summer is a time when gardens are full of beautiful flowers and wonderful smells, of buzzing bees and singing birds. But the garden is not always a happy place to be, especially if you have six legs and a pair of wings. So the next time you're invited to dinner BEWARE, because the dinner just might be YOU!

When an insect gets stuck on the sticky leaves of the Sundew plant there is no escape. Slowly the leaf curls up like the tail of a cat and wraps itself around the poor thing. After the soft juicy parts are dissolved by the plant, the leaf uncurls and the hard bits fall off.



Help!
Somebody find
a key and let
me out

When a creepy crawly touches the hairs of the Venus Fly Trap – SNAP! It is imprisoned behind spiky bars and walls which press in tighter and tighter and tighter before the plant gulps it down.

The Cobra Lily doesn't have to do much. It has leaves that look like ships' funnels and when the insect lands on the slippery lip – SPLASH! It falls into a watery pool at the bottom of the plant and drowns. Mmmmm bug soup. Tasty!



This
swimming
pool is a bit
crowded. And
where's the
ladder to get
out?