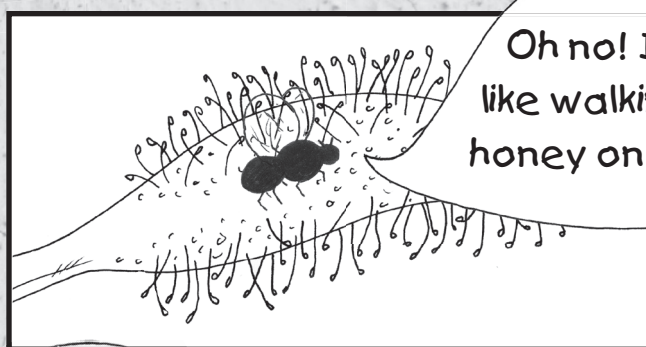


# KILLER PLANTS

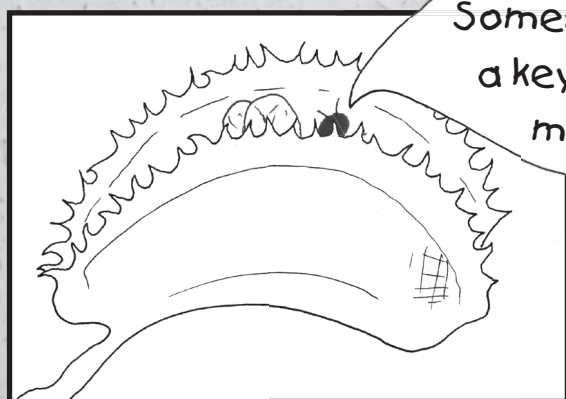


Summer – a time when gardens are a mass of beautiful flowers and wonderful aromas, of buzzing bees and chirping birds. But the garden isn't always a place full of happiness, especially if you have six legs and a pair of wings. So the next time you receive an invitation to dinner, BEWARE, for dinner just might be YOU!

When an insect becomes stuck on the tacky leaves of the **Sundew plant** there is little chance of it escaping with its life. Slowly the leaf curls up like the tail of a cat and wraps itself around the poor thing. After the plant has dissolved the soft juicy parts, the leaf uncurls and the hard leftover bits drop to the ground.



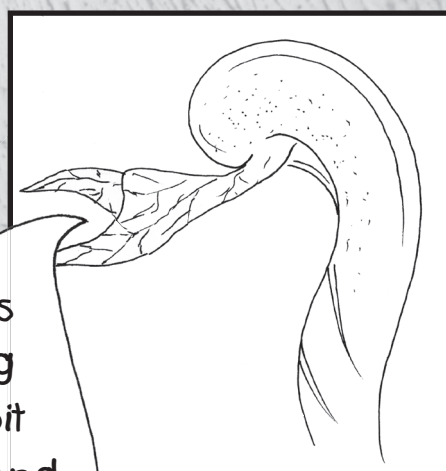
Oh no! It's  
like walking in  
honey on here



Help!  
Somebody find  
a key and let  
me out

When a creepy crawly accidentally touches the hairs of the **Venus Fly Trap** – SNAP! It's imprisoned behind razor sharp bars and thick walls which press in ever tighter and tighter before finally the plant gulps it down.

The **Cobra Lily** doesn't have to do much. Its leaves look like ships' funnels and have slippery lips. When the insect lands – SPLASH! It falls into a watery pool at the base of the plant and eventually drowns. Mmmmmmm bug soup. Tasty!



This  
swimming  
pool is a bit  
crowded. And  
where's the  
ladder to get  
out?