

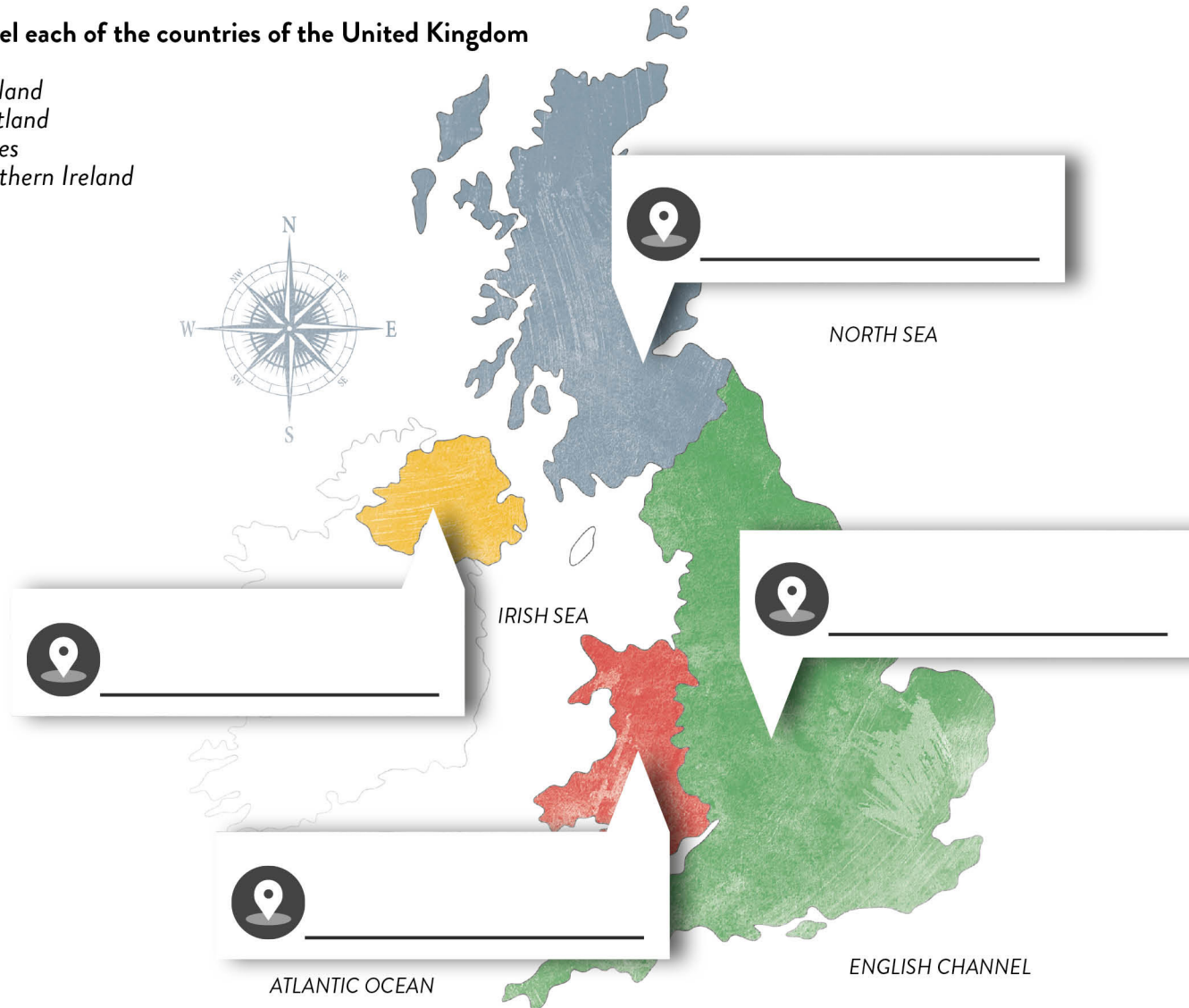
# WHERE IS THE UK? WHAT ARE THE BODIES OF WATER AROUND THE UK?



## PART 1: QUIZ

### 1) Label each of the countries of the United Kingdom

England  
Scotland  
Wales  
Northern Ireland



## GLOSSARY

**continent** one of seven large land masses in the world.

**Europe** the continent containing the UK.

**bodies of water** For example seas, oceans, rivers, lakes, canals.

 PART 2: WHERE IN EUROPE IS THE UK?

The seven continents of the world are: North America, South America, Antarctica, Europe, Asia, Africa and Australia.



The United Kingdom is in Europe, along with more than 50 other countries. The UK's nearest neighbour is France which is just across the English Channel or La Manche as they call it in France. The UK is in the North-West part of Europe.






 PART 3: WHICH BODIES OF WATER SURROUND THE UK?

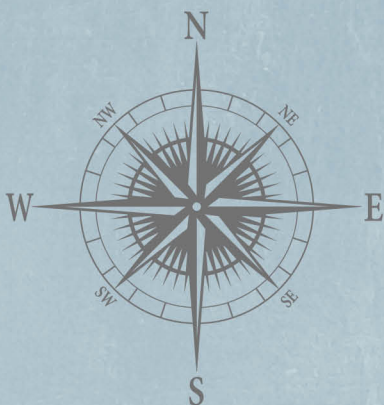
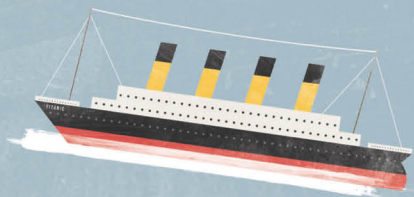
The UK is surrounded by four main bodies of water: the Atlantic Ocean, The English Channel, the Irish Sea and the North Sea. There is so much water all around us that it is no surprise that the UK has a strong tradition of exploring, ship-building and fishing.

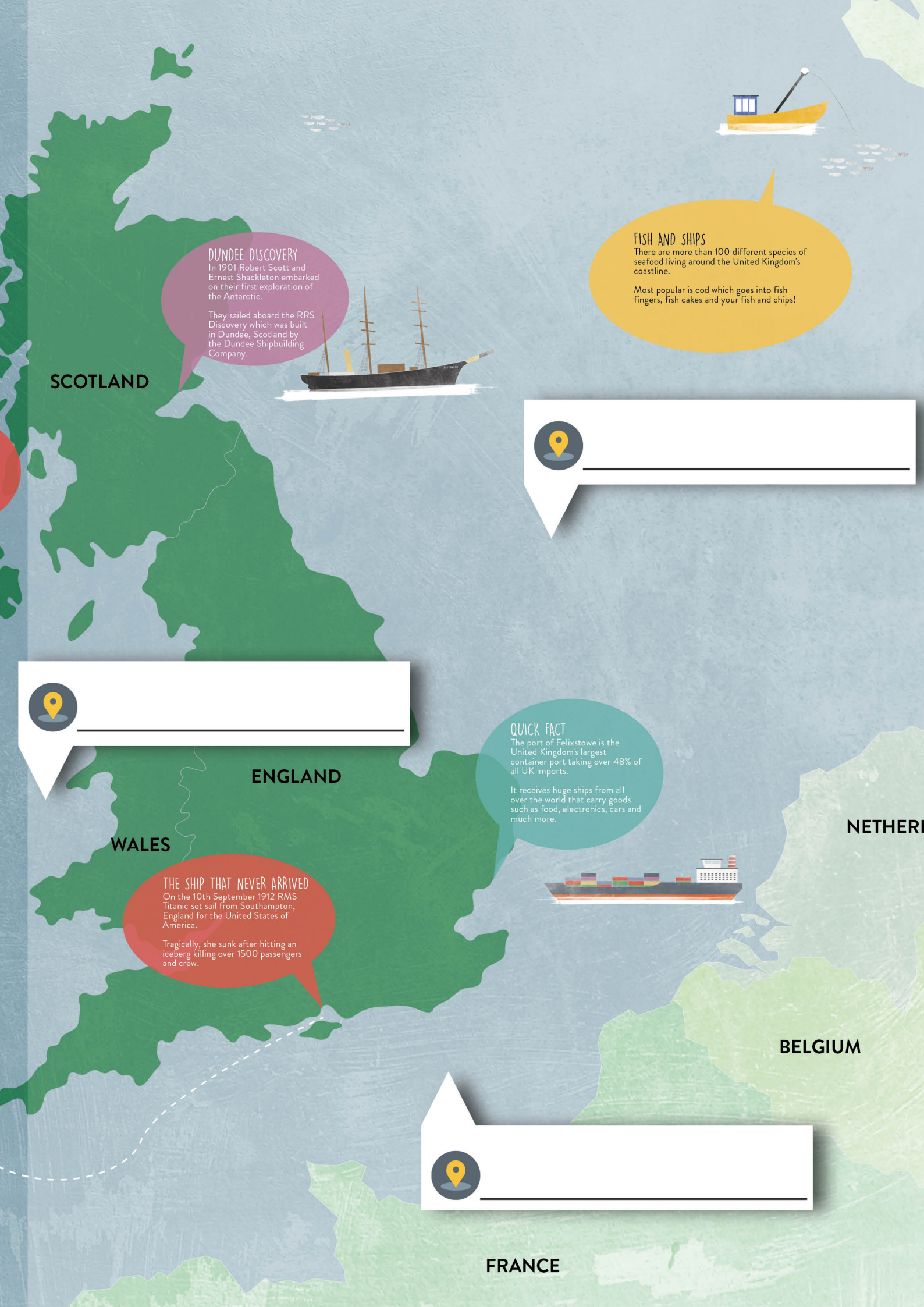
**SHIP BUILDERS**  
The famous cruise ship, RMS Titanic was built in Belfast, Northern Ireland by Harland & Wolff.



Can you label the four main bodies of water around the United Kingdom?

-  *The Atlantic Ocean*
- The English Channel*
- The Irish Sea*
- The North Sea*





SCOTLAND

**DUNDEE DISCOVERY**

In 1901 Robert Scott and Ernest Shackleton embarked on their first exploration of the Antarctic.

They sailed aboard the RRS Discovery which was built in Dundee, Scotland by the Dundee Shipbuilding Company.



**FISH AND SHIPS**

There are more than 100 different species of seafood living around the United Kingdom's coastline.

Most popular is cod which goes into fish fingers, fish cakes and your fish and chips!



ENGLAND

WALES

**THE SHIP THAT NEVER ARRIVED**

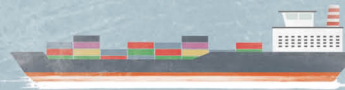
On the 10th September 1912 RMS Titanic set sail from Southampton, England for the United States of America.

Tragically, she sunk after hitting an iceberg killing over 1500 passengers and crew.

**QUICK FACT**

The port of Felixstowe is the United Kingdom's largest container port taking over 48% of all UK imports.

It receives huge ships from all over the world that carry goods such as food, electronics, cars and much more.



NETHERLANDS

BELGIUM



FRANCE