

CRETACEOUS PERIOD

(146-66 Million Years Ago)



QUIZ

1. Sauropods eat:

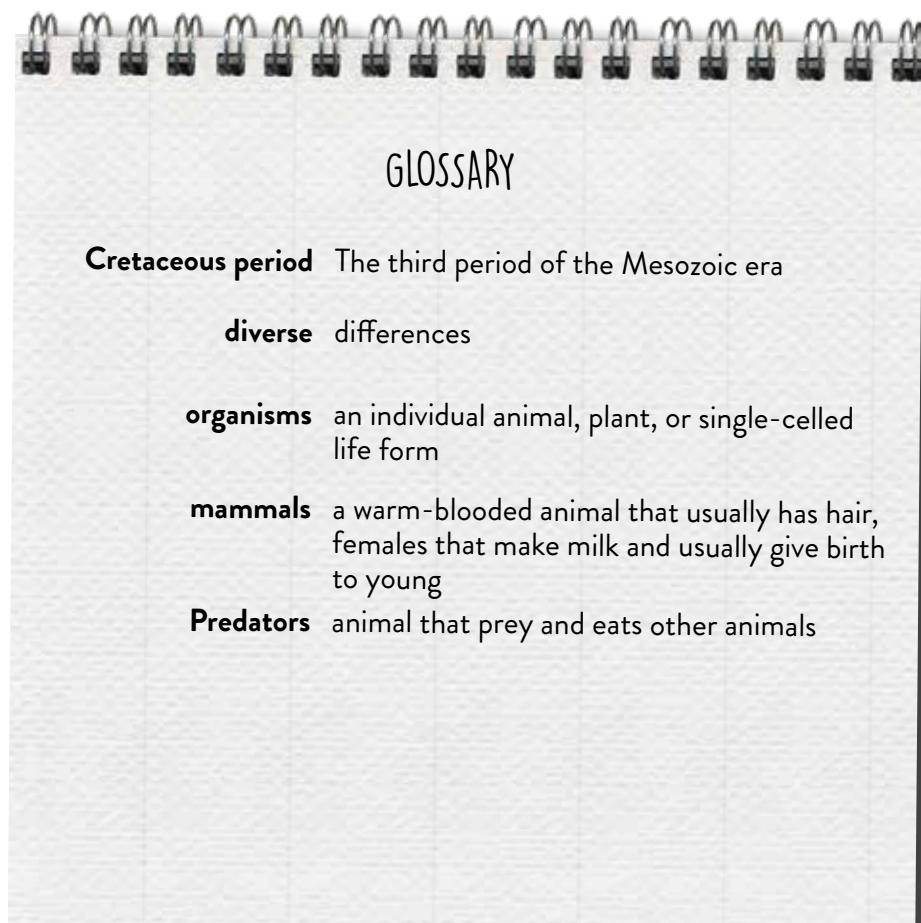
- fish
- vegetation such as leaves and plants
- Meat

2. During the Jurassic period, rainfall increased forming

- ponds
- seas
- lakes

3. The weather became cooler during the Jurassic period allowing:

- human beings to live
- more trees and plants to grow.
- snow and ice to form





THE CRETACEOUS PERIOD

During the Cretaceous the land separated further into some of the continents we recognise today, although in different positions.



THE PANGAEA



EARTH TODAY

This meant that dinosaurs evolved independently in different parts of the world, becoming more diverse.



Various insect groups appeared, including bees, which helped increase the spread of flowering plants.

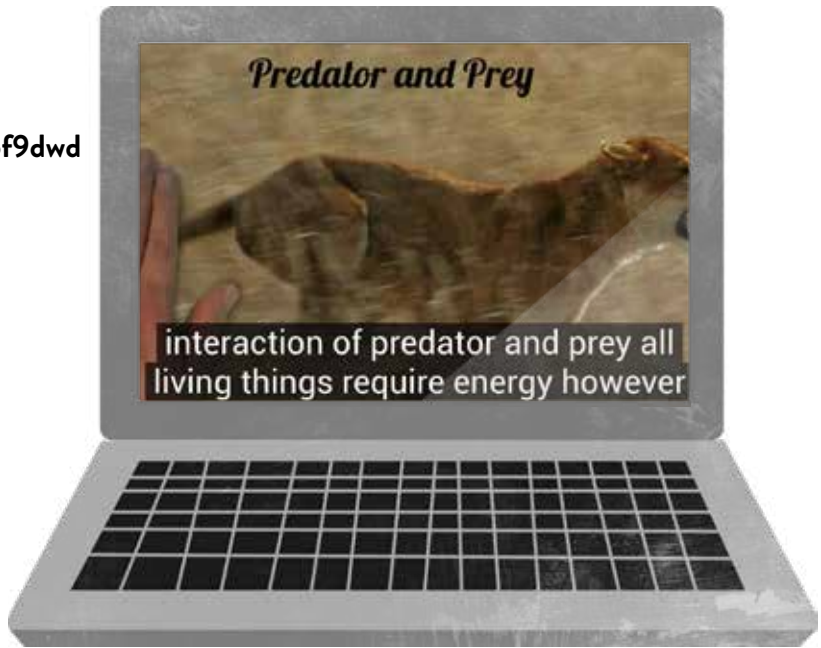
And mammals now included tree climbers, ground dwellers and even predators of small dinosaurs.





WHAT IS A PREDATOR?

CLICK HERE: <https://bit.ly/36f9dwd>



TIMELINE

Use the time line to put the three periods in order using the terms:

- TRIASSIC
- CRETACEOUS
- JURASSIC

--	--	--

Now name two major differences in each period.

Jurassic

1. _____

2. _____

Triassic

1. _____

2. _____

Cretaceous

1. _____

2. _____

